

230 Ashland Place

Fort Greene, Brooklyn, NY

Corner of Fulton Street and Ashland Place



Fort Greene
RETAIL

Forté Condominium

Approximate Size
Ground Floor - 3,833 sf

Frontage
146 feet

Rent
Upon request

Term
Negotiable

Possession
Fall 2007

Comments
-New 28-story, 108-unit luxury residential condominium under construction
-Adjacent to BAM (Brooklyn Academy of Music) Harvey Theater
-Within walking distance to the 2, 3, 4, 5, A, B, C, D, G, M, N, Q, R subway lines and the LIRR
-Approximately 364 sf of outdoor plaza area for commercial use

For more information, please contact exclusive agents:

David Rosenberg
Executive Vice President
dr@rkf.com

Barry Fishbach
Executive Vice President
bf@rkf.com

212.599.3700

RKF

**ROBERT K. FUTTERMAN
& ASSOCIATES**



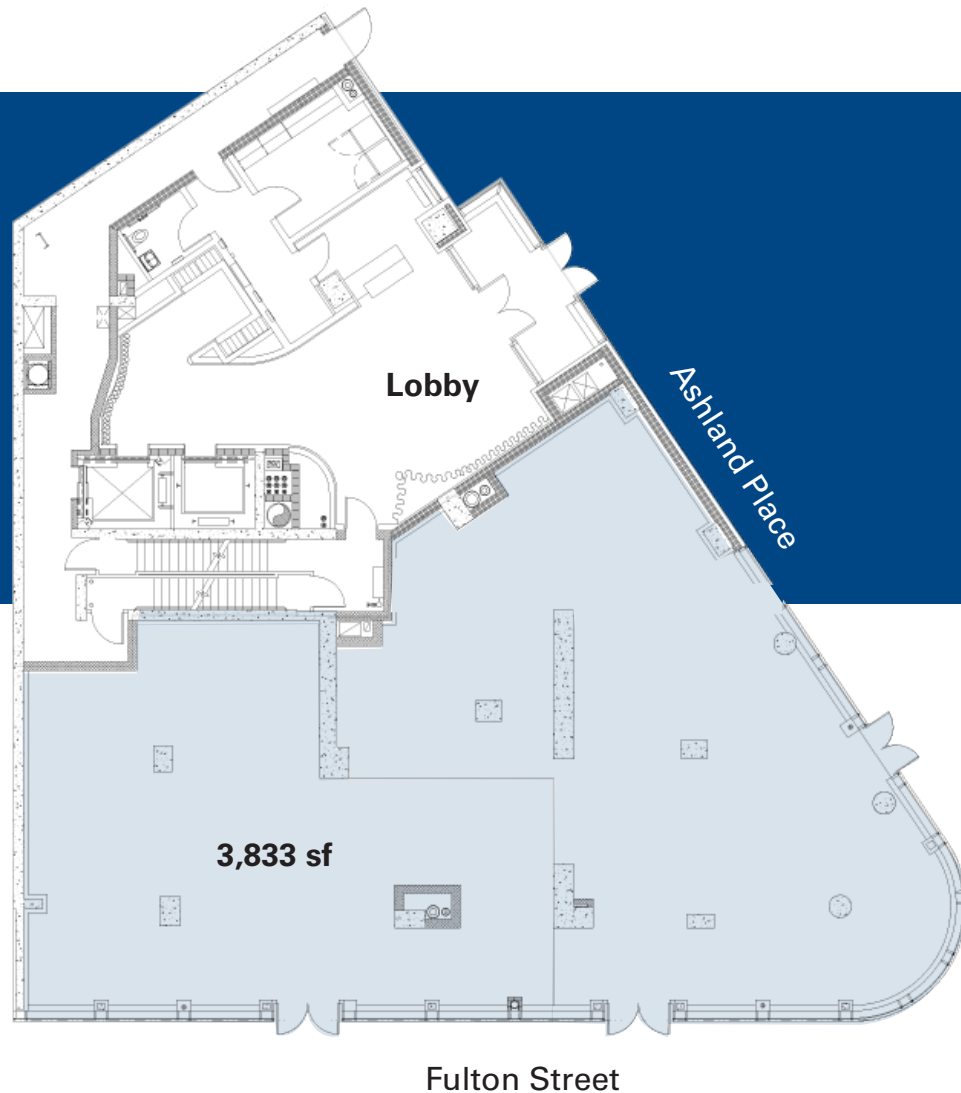
521 Fifth Avenue, Seventh Floor, New York, NY 10175 | P 212.599.3700 | F 212.599.3744 | E info@rkf.com | www.rkf.com

All information supplied is from sources deemed reliable and is furnished subject to errors, omissions, modifications, removal of the listing from sale, and to any listing conditions, including the rates and manner of payment of commissions for particular offerings imposed by principals or agreed by this Company, the terms of which are available to principals or duly licensed brokers. Any square footage dimensions set forth are approximate.

230 Ashland Place

Fort Greene, Brooklyn, NY

Ground Floor



Approximate Size
Ground Floor - 3,833 sf

RKF

521 Fifth Avenue, Seventh Floor, New York, NY 10175 | P 212.599.3700 | F 212.599.3744 | E info@rkf.com | www.rkf.com

All information supplied is from sources deemed reliable and is furnished subject to errors, omissions, modifications, removal of the listing from sale, and to any listing conditions, including the rates and manner of payment of commissions for particular offerings imposed by principals or agreed by this Company, the terms of which are available to principals or duly licensed brokers. Any square footage dimensions set forth are approximate.